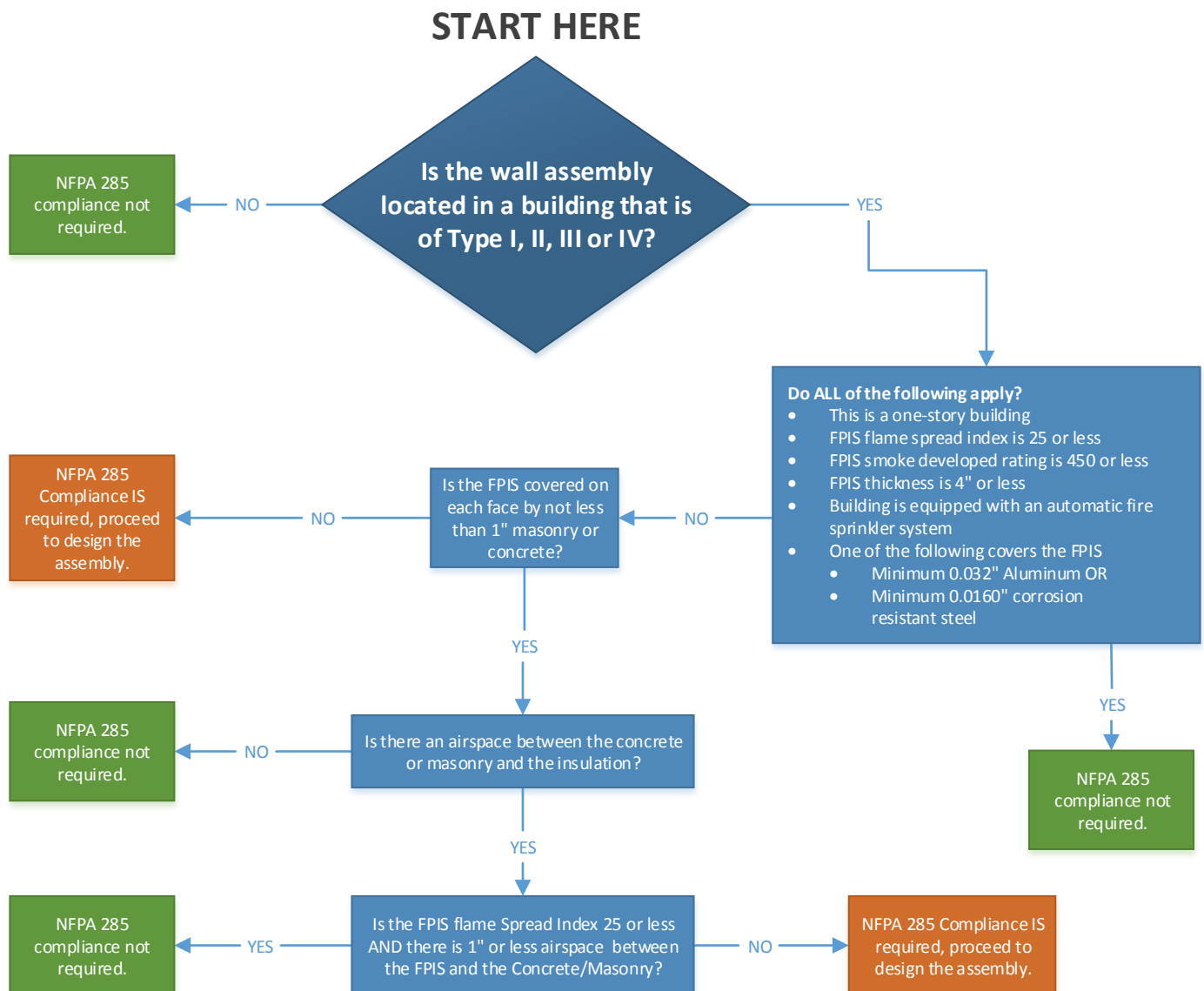


# Is my FPIS Wall Assembly Required to Comply with NFPA 285 Testing?\*

Foam plastics used in buildings of Types I-IV construction require an assessment of their ability to resist vertical and lateral flame spread. Often, this requires testing a wall assembly using NFPA 285 and the use of engineering extensions to allow substitutions of other products that would perform equal to or better than the tested assembly.

This decision tree will help you determine whether the building code actually requires the assembly to be NFPA 285 compliant. This decision tree is based on the 2012 and 2015 versions of the International Building Code.



**\*This decision tree applies to FPIS wall assemblies ONLY.  
For other product types, consult the applicable section of your building code.**